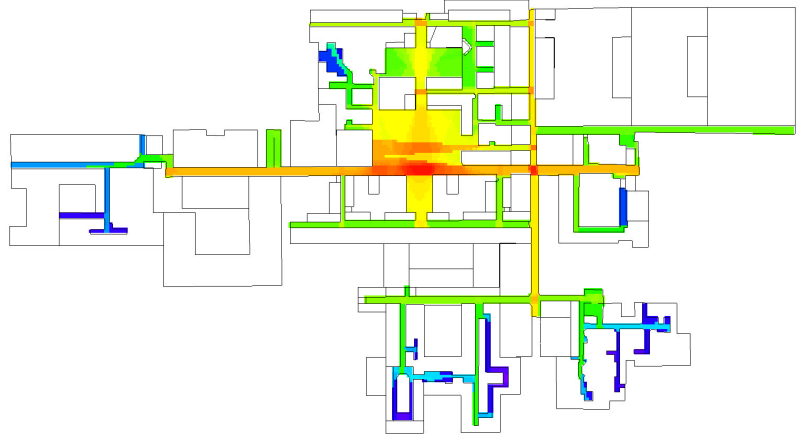


Healthcare design our contribution

A
Visitor circulation analysis,
Colchester General Hospital,
UK, 2003



A

Evidence-based technique

Space Syntax has developed world-leading methods for analysing spatial layout, observing patterns of space use within the hospital environment and designing ward layouts and hospital circulations which optimise space use and interaction.

These techniques work by measuring the properties of spatial layouts that users perceive: lines of sight along streets and corridors, visual fields from public spaces, reception areas and nurse stations and degrees of privacy and openness.

Using Space Syntax methodology it is possible to measure the direct consequences of layout design such as movement, levels of co-presence and interaction, and patterns of anti-social behaviour - burglary, vandalism and theft.

A human perspective

Our objective is to ensure that hospital designs fulfill the expectations of all their users: patients, staff and visitors.

We do this using tailor-made design techniques to create customer-focused solutions. Our computer models can be used at every stage of the design process from briefing to strategic design and evaluation.

Our focus is people. We help to create places that offer comfort, safety, privacy and dignity to their users. We offer a series of evidence-based design techniques that can substantially reduce the risk involved in the hospital design process.

Experience from practice

Our recent work with NHS Estates investigates how different ward types - Nightingale, 50/50s and exclusively single-bed wards - affect movement and interaction patterns. Our findings show that the spatial layout of well-designed wards can accommodate requirements of privacy, close nurse-patient access and surveillance and reduced travel distance for nurses, while at the same time provide opportunities for co-presence and informal interaction.

In 1994 our work on crime, security and space use was published as Health Facilities Note 05 - Design Against Crime: a strategic approach to hospital planning.

Appointments and selected projects

B
European case studies,
patient circulation analysis
of four hospital wards,
2002



Appointments

Tim Stonor RIBA FRSA
Managing Director

Tim is a member of the steering group of the UK National Health Service Design Review Panel, charged with the delivery of design excellence in the capital expenditure of the NHS in the next 5 years.

Tim's particular remit is layout design, from whole-site planning to ward configuration. The Design Review Panel assists hospital trusts in developing Public Sector Comparator (PSC) schemes and in appraising Private Finance Initiative (PFI) design bids.

Tim is also a member of the Design Review Panel of the UK Commission for Architecture and the Built Environment (CABE).

Selected projects

2005
12 Design Principles
for the Department of Health Future Healthcare Network - assistance in the development of design principles (current, for ministerial launch in mid-July).

2005
Healthcare Design in Norway
for NHS Estates - report on a recent Department of Health mission to visit newly completed and under-construction major healthcare projects in Oslo and Trondheim.

2005
Strategic Design Guidance
for NHS Estates - ongoing development of written briefing material and software applications to help set layout design standards and assist healthcare designers in meeting these standards.

2002
Patient Dignity: Ward Design
for NHS Estates - evaluation of patient, staff and visitor interactions in a range of hospital layouts.

2002
UMIST Biocentre, Manchester
with Anshen/Dyer Architects for UMIST - evaluation of design proposals for a new science building.

2001
Royal Infirmary, Edinburgh
with Foster & Partners for Taylor Woodrow Capital Developments - strategic urban design input to proposals for a mixed-use redevelopment of the hospital estate.

1992
Pinderfields, Greenwich and Exeter Hospitals
for NHS Estates - crime and security study, producing Nucleus Study Pack.